

# PLAIN BALL

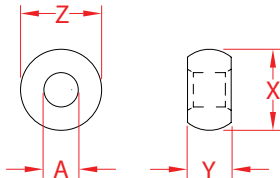
## 316 STAINLESS STEEL



Import



Precision  
Machined



ITEM	A (wire)	BEFORE (swage)	AFTER (swage)	X (height)	Y (length)	Z (width)	WT (lb)	PACKAGING TYPE	EACH (qty)	INNER (qty)	CARTON (qty)	UPC
S0757-0000	1/32"	0.21"	0.19"	0.21"	0.14"	0.21"	0.01/100	POLYBAG	1	100	30,000	791506050926
S0757-0001	3/64"	0.21"	0.19"	0.21"	0.14"	0.21"	0.01/100	POLYBAG	1	50	5,000	791506050933
S0757-0002	1/16"	0.21"	0.19"	0.21"	0.14"	0.21"	0.01/100	POLYBAG	1	50	5,000	791506050940
S0757-0003	3/32"	0.29"	0.25"	0.29"	0.17"	0.29"	0.01/100	POLYBAG	1	100	20,000	791506050957
S0757-0004	1/8"	0.36"	0.32"	0.36"	0.19"	0.36"	0.4/100	POLYBAG	1	50	8,000	791506050964
S0757-0005	5/32"	0.43"	0.38"	0.43"	0.23"	0.43"	0.6/100	POLYBAG	1	10	2,000	791506050971
S0757-0006	3/16"	0.50"	0.44"	0.50"	0.26"	0.50"	0.01	POLYBAG	1	10	2,000	791506050988
S0757-0007	7/32"	0.56"	0.49"	0.56"	0.30"	0.56"	0.01	POLYBAG	1	25	2,500	791506050995
S0757-0008	1/4"	0.63"	0.56"	0.63"	0.34"	0.63"	0.02	POLYBAG	1	10	2,000	791506051008

**NOTE:**  
**ALL DIMENSIONS ARE NOMINAL (+/- 3%) AND ARE SUBJECT TO CHANGE WITHOUT NOTICE.**